

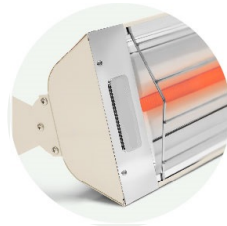
## Color and finish options



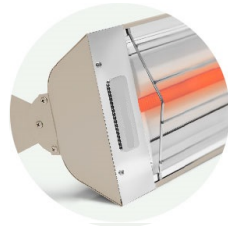
WHITE



BISCUIT



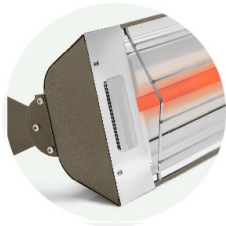
ALMOND



BEIGE



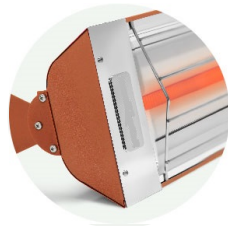
BLACK



BRONZE



GREY



COPPER

- electricSchwank heaters are available in a brushed stainless steel finish, along with a variety of standard color options that include the samples shown.
- All electricSchwank colors are powder coated over 304 stainless steel and baked to achieve a long lasting, fade and corrosion resistant finish.
- Flush mount installations require powder coating the frame, rather than the heater itself, to achieve the desired look.

## Flush mount frames

