

# Technical Specifications



## ultraSchwank

### APPLICATION

The ultraSchwank UHE Series is a gas-fired, high radiant output, infrared radiant tube heater approved for indoor commercial/industrial applications.

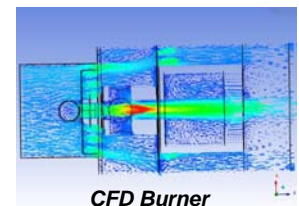
- Facilities that require efficient personnel comfort or freeze protection
- Factories, warehouses, service garages, fabricating shops, manufacturing facilities, and other
- Not for residential application

### FEATURES & BENEFITS

High efficiency burner combined with insulated reflector increases the appliance radiant efficiency by 25% to 50% vs. other radiant tube heating systems. The additional infrared radiant heat output from the ultraSchwank UHE Series results in significantly reduced fuel consumption and carbon emissions, and improved personnel comfort.

UHE burner design developed with computerized fluid dynamic modeling (CFD):

- Higher combustion efficiency
- Excess air cut in half
- Longest flame
- Whisper quiet operation



'Clam shell' burner cabinet opens down to the service position:

- Easy service access
- Burner fully operational in open position
- Control by either line voltage or 24V thermostat
- Duct outside combustion air to burner sealed combustion system



Reflector assembly with Alkaline Earth Silicate refractory insulation:

- Inner and outer aluminum-silicate hot-bonded steel reflector
- Cuts radiant heat emission upward
- Raises emitting tube surface temperature for more radiant heat output to works
- Open hangers increase uniformity of tube surface temperature and radiant heat output

MODEL	BTUH	SYSTEM LENGTH	WEIGHT IN LBS.	Mounting Heights for Comfort (ft) <i>(Space Heating)</i>	MINIMUM GAS LINE PRESSURE	MAXIMUM GAS LINE PRESSURE	MANIFOLD PRESSURE	ELECTRICAL
UHE 60-20	60,000	21' 6"	190	12 - 20	5" W.C. Natural Gas	14" W.C.	3.5" W.C. Natural Gas	120V 60 HZ 145VA  (Internal 24V burner components 21VA)
UHE 60-30	60,000	31' 2"	272	12 - 20				
UHE 90-30	90,000	31' 2"	272	14 - 22				
UHE 90-40	90,000	40' 10"	354	14 - 22				
UHE 130-40	130,000	40' 10"	354	16 - 25				
UHE 130-50	130,000	50' 6"	436	16 - 25				
UHE 160-50	160,000	50' 6"	436	18 - 30				
UHE 160-60	160,000	60' 2"	518	18 - 30				
UHE 200-60	200,000	60' 2"	518	20 - 40				
UHE 200-70	200,000	69' 10"	600	20 - 40				

## MINIMUM CLEARANCES TO COMBUSTIBLES

CLEARANCE TO COMBUSTIBLE MATERIAL	SUSPENDED HORIZONTALLY			SUSPENDED AT AN ANGLE UP TO 35°			
	Top	Side	Below	Top	Rear	Front	Be-
	A	S	U	D	B	F	C
<b>UHE 60</b>	0.5"	16"	45"	1.0"	3.25"	35"	41"
<b>UHE 90</b>	1.25"	26"	70"	2.5"	5.25"	50"	60"
<b>UHE 130</b>	1.5"	30"	86"	3.0"	6.25"	57"	70"
<b>UHE 160</b>	3.0"	45"	105"	5.5"	10.0"	75"	85"
<b>UHE 200</b>	3.5"	56"	111"	8.0"	12.5"	90"	93"

Suspended Horizontally

$H = T - U$

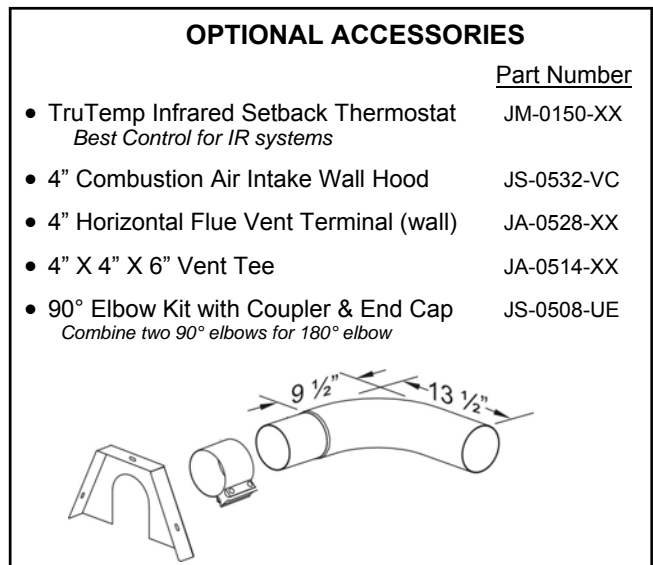
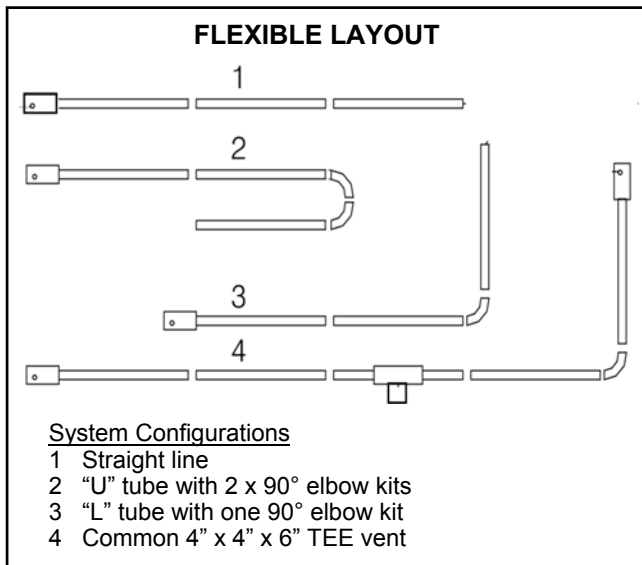
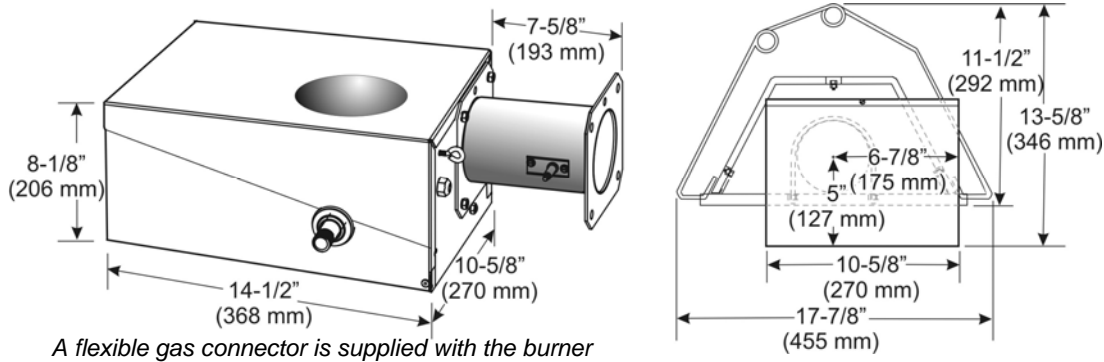
Maximum stack height 'H' = Deduct 'U' from 'T'. 'T' is a measured distance on site; Value 'U' is in the adjacent Table.

Suspended at an angle up to 35°

$H = T - C$

Maximum stack height 'H' = Deduct 'C' from 'T'. 'T' is a measured distance on site; Value 'C' is in the adjacent Table.

A 'peel & stick' sign is provided with the heater. Use a permanent marker to enter values H, S, F, & B on the sign, then post it adjacent to the thermostat or in a prominent location.



Schwank USA  
Two Schwank Way,  
Waynesboro GA 30830



Schwank Canada  
5285 Bradco Blvd,  
Mississauga, Ontario L4W 2A6

1-877-446-3727

csr@schwankgroup.com

[www.schwankgroup.com](http://www.schwankgroup.com)