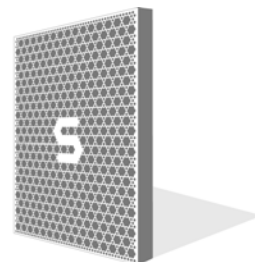


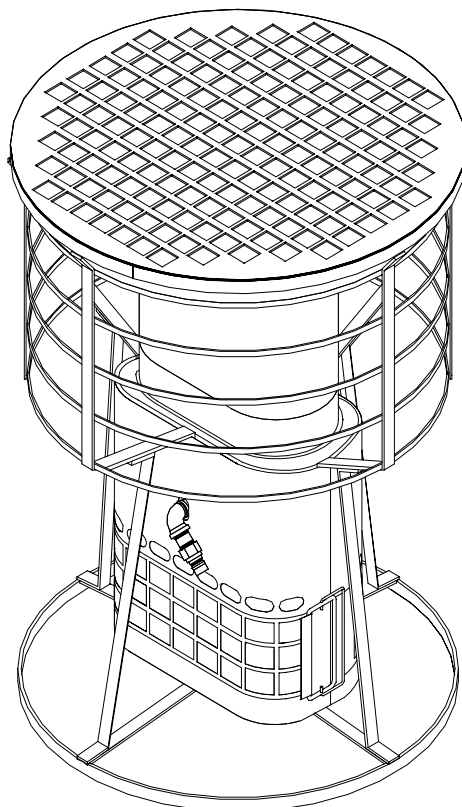
INSTALLATION / OWNER'S MANUAL

Schwank
infra-red gas heaters
ISO 9001:2000 REGISTERED



SCHWANK GAS-FIRED INFRA-RED CONSTRUCTION HEATER

MODEL NUMBER: SCH-200-N / SCH-200-L



CAUTION: Read all instructions before use. Retain this manual for further reference.

NOTICE:

*Schwank Inc., reserves the right to make changes to equipment and specifications without obligation or notification.
All codes are current at the time of printing.*

This publication, or parts thereof, may not be reproduced in any form, without prior written consent from Schwank Inc. Unauthorized use or distribution of this publication is strictly prohibited.

*Schwank Inc.
5285 Bradco Boulevard
Mississauga, Ontario,
L4W 2A6
phone: (905) 712-4766
fax: (905) 712-8336*

*Schwank Inc.
PO Box 988
Waynesboro,
Georgia, USA 30830
Phone: (706) 554-6191
Technical Support: 1-877-446-3727
Fax: (706) 554 9390*

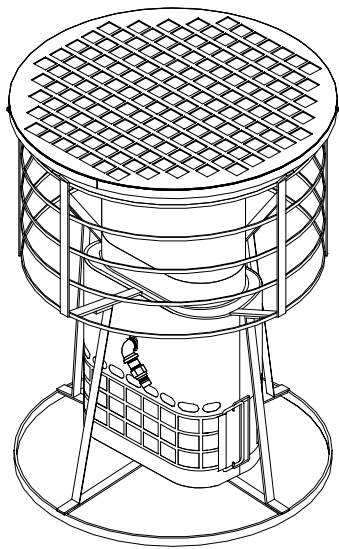
e-mail: info@schwankheaters.com

<http://www.schwankheaters.com>

TABLE OF CONTENTS

INFORMATION AND SAFETY LABELS	4
1.0 INSTALLATION REQUIREMENTS	6
1.1 GENERAL INSTRUCTIONS	6
1.2 GAS SUPPLY LINE/GAS PRESSURE	6
1.3 VENTILATION REQUIREMENTS	6
1.4 CLEARANCES TO COMBUSTIBLES	6
1.5 MOUNTING INSTRUCTIONS	7
1.6 LIGHTING/SHUTDOWN INSTRUCTIONS	8
2.0 MAINTENANCE	8
3.0 REPLACEMENT PARTS	10
4.0 LIMITED WARRANTY	12
5.0 SERVICE OR WARRANTY CLAIM	13

TECHNICAL SPECIFICATIONS



<u>Input (BTU)</u>	-	200,000	(0 to 4500 ft above sea level)
<u>Height (inches):</u>	44"	<u>Width (inches):</u>	31"
<u>Ignition controls:</u>	standing pilot	<u>Thermostat:</u>	finger touch control
<u>Tip-over switch:</u>	35°	<u>Gas inlet:</u>	1/2"
<u>Clearances to:</u>	48" (top)	<u>Minimum gas:</u>	6" (NG)
<u>Combustibles</u>	52" (side)	<u>Pressure (W.C.)</u>	11" (LP)

No electric power required.

For Your Information and Safety ...

Please read the following warning labels.

WARNING

Failure to comply with the precautions and instructions provided with this heater can result in death, serious bodily injury and property loss, damage from hazards of fire explosion, burn, asphyxiation, and carbon monoxide poisoning,

Only persons who can understand and follow the instructions should use this heater. Service of this heater should be performed by a qualified service person only.

If you need assistance, or heater information such as an instruction manual, labels, etc. contact your local dealer.

WARNING

FOR YOUR SAFETY

- DO NOT store or use gasoline or other flammable vapors and liquids in the vicinity of this or any other appliance.

WHAT TO DO IF YOU SMELL GAS:

- DO NOT try to light any appliance.
- DO NOT touch any electrical equipment.
- DO NOT use any telephone equipment in the immediate area.
- Immediately call your gas supplier or call the fire department.

WARNING

Improper assembly, adjustment, alteration, service or maintenance can cause injury, property damage, or death. For assistance or additional information, refer to this manual, or consult a qualified service agency, or the gas supplier.

WARNING

Fire, burn, inhalation, and explosion hazard. Keep solid combustibles, such as building materials, paper or cardboard, a safe distance away from the heater as recommended by the instructions. Never use the heater in spaces that do or may contain volatile or airborne combustibles, or products such as gasoline, solvents, paint thinner, dust particles or unknown chemicals.

⚠ WARNING

- DO NOT use heater in living or office areas.
- Approved for heating buildings or structures under construction, alteration or repair.
- Use only in well ventilated areas.
- Heater must be used exclusively for heating purposes.
- The distance between the heating surface top to the nearest combustible must be at least 48 inches. The distance from the burner surface, in a horizontal plane, to the nearest combustible must be at least 52 inches.
- The heater must not be directed towards any LP gas container within 15 feet.
- The fuel supply line must not be placed near the burner heat zone.
- DO NOT store or use gasoline or other flammable vapors or liquids in the vicinity of this or any other appliance.
- DO NOT use this heater if any part has been under water. Call a professional gas appliance service person to inspect the heater, and to replace any part which has been under water.
- Any changes to this heater or the heater's controls can be very dangerous.
- Any part removed must be replaced prior to operating the heater.
- Failure to follow these warnings may result in property damage, bodily injury or death.
- The heater must be installed in such a way that it is not directly exposed to water spray, rain and or dripping water.

⚠ WARNING

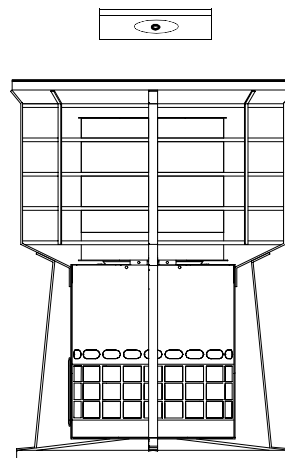
NOT FOR HOME OR RECREATIONAL VEHICLE USE

This heater is designed and approved for use as a construction heater per Canadian Standard 2.14 and Ansi Z83.7-2000.

CHECK WITH YOUR LOCAL FIRE SAFETY AUTHORITY IF YOU HAVE ANY QUESTIONS ABOUT APPLICATIONS.

Other standards govern the use of fuel gases and heat producing products in specific applications. Your local authority can advise you about these.

⚠ WARNING



**HEATER
MUST BE
LEVEL
BEFORE
OPERATING**

1.0 INSTALLATION REQUIREMENTS

1.1 GENERAL INSTRUCTIONS

1. Examine contents for damage or missing parts before proceeding with these instructions.
2. Installation of heaters must conform to all local codes.
3. Ensure that heater is level before operation.

1.2 GAS SUPPLY & PRESSURE INFORMATION

All piping and hose must be installed according to local code, and must be of adequate size and construction.

⚠ WARNING

1. Minimum hose length –
Canada- fifteen feet (15') — USA-ten feet (10')
Maximum hose length - fifty feet (50')
(1" inside diameter)
2. LP Gas Cylinder must be located a minimum fifteen feet away from heater while heater is in operation.
3. After assembly and every time the heater is attached to a new gas cylinder or gas meter, check for leaks with a soap solution or leak tester on all gas lines and connections. Failure to do so may result in property damage, bodily injury or death. **DO NOT USE AN OPEN FLAME.**

If high pressure is used to check for leaks, do not subject this heater's controls to excessive pressure.

Natural gas models must have the supply line limited to 14 inches (maximum) water column.

If the line pressure will go above 14 inches water column at any time, a separate regulator must be used. The minimum supply line pressure at the inlet to the heater regulator must in no case be lower than 6 inches of water column.

Note: The regulator is an internal component of the heater and maintains the heater's manifold pressure; natural gas is 5 inches water column, and LP gas is 10 inches water column.

Heaters equipped for LP gas operations must have a minimum supply line pressure 11 inches of water column at the heater. Maximum line pressure is 1/2 PSI (14 inches water column).

1.3 VENTILATION REQUIREMENTS

It has been determined that CO₂ levels should not exceed 5000 PPM (parts per million) and CO should not exceed 35 PPM for an eight hour continuous exposure.

Combustion of gas fuel requires air. Each SCH-200 heater requires 200 sq.in. of opening for combustion air. (ex.: 20" x 10" window opening)

To maintain the carbon dioxide content in the air at or below the concentration mentioned above, the number of air changes are listed below depending on the size of the space being heated:

TABLE 1

Required room air changes per hour for each SCH-200 in operation.	
Room Volume cu.ft.	No. of air changes / HR
5000	10
7,500	6
10,000	5
15,000	3
20,000	2.5
25,000	2
50,000	1

1.4 CLEARANCES TO COMBUSTIBLES

TABLE 2

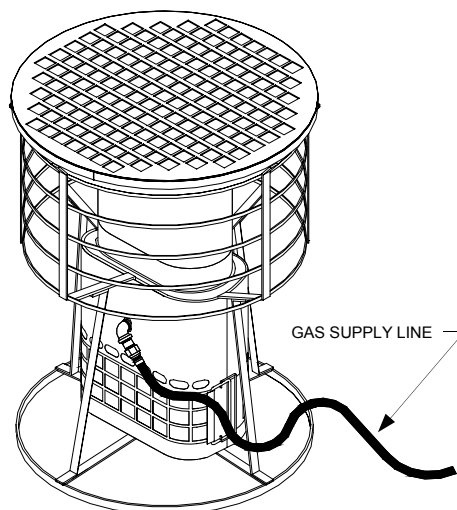
MODEL	SIDE (From Radiant Surface)	TOP (From Radiant Surface)
SCH-200-N	52"	48"
SCH-200-L	52"	48"

1.5 MOUNTING INSTRUCTIONS

FIGURE 1: FREE STANDING FLOOR MOUNT

A steel rod, non-combustible base is an integral part of this heater. The heater may safely be placed directly on a combustible surface. Always maintain minimum distance to combustibles as shown in Table 2. Gas supply hose/piping must lay over the top of bottom rim of heater as shown here.

NOTE: Heater is equipped with a tilt safety feature. Heater will automatically shut down when it is tilted over 35 degrees.



WARNING

Surface of heater will be hot to the touch. Take proper precautions. If heater location must be changed, allow heater to cool a full **15 minutes** before attempting to relocate.

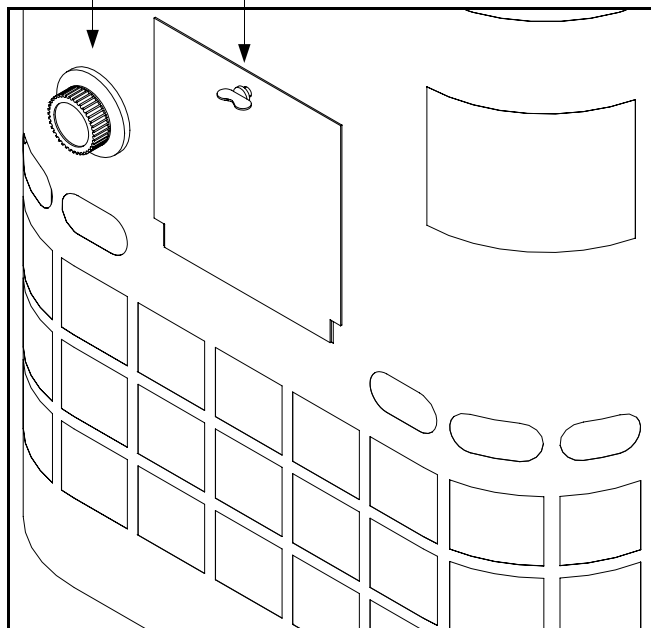


CAUTION

On floor mounted units, the Gas supply line must lay above the bottom rim of heater. See Figure 2.

1.6 LIGHTING / SHUTDOWN INSTRUCTIONS

1. Set thermostat to “coolest” (lowest) setting.
2. Pre-purge gas line prior to lighting.
3. Open the door in the compartment above filter section.
4. Turn gas control knob clockwise to OFF. Wait five minutes to dissipate any unburned gas. Sniff around the appliance near the floor. Don't relight pilot if you smell gas.
5. Turn gas control knob counterclockwise to PILOT. Push down and hold the knob while you light pilot burner.
6. Hold the gas control knob down about one minute, then release. If the pilot goes out, turn gas control knob clockwise to OFF. Repeat steps 1-3.
7. Release gas control knob. If pilot remains lit, turn counterclockwise to ON.
8. Close the door.
9. Set thermostat to desired setting.



2.0 MAINTENANCE

This heater should be cleaned at least once annually with a dry cloth. This heater should be inspected before each use and at least once annually by a qualified service person.

The gas hose assembly shall be visually inspected prior to each use of the heater. If damage is evident it must be replaced prior to the heater being placed into operation. For replacement part information, see page 9 & 10.

LP model heaters should use a standard LP gas cylinder. Cylinder must be located a minimum of 10 feet away from heater while heater is in operation. The cylinder must be provided with a system for vapor withdrawal. The gas must be turned off at the LP gas supply cylinder when the heater is not in use. The connection of the gas cylinder should be made with the #510 connector which tightens by turning the threads to the left. To disconnect the fitting make sure the gas is turned off, and loosen threads by turning them to the right. When heater is to be stored indoors the connection between the LP gas cylinder and the heater must be disconnected. The cylinder must be stored in accordance the Canadian National Code for the Storage and Handling of L.P. Gases.

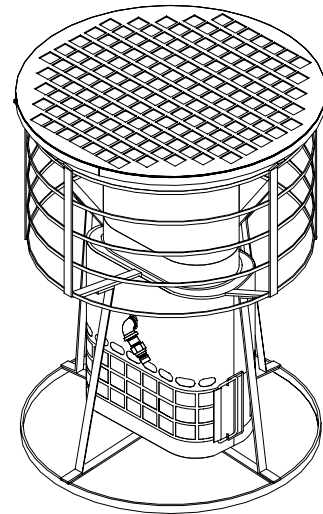
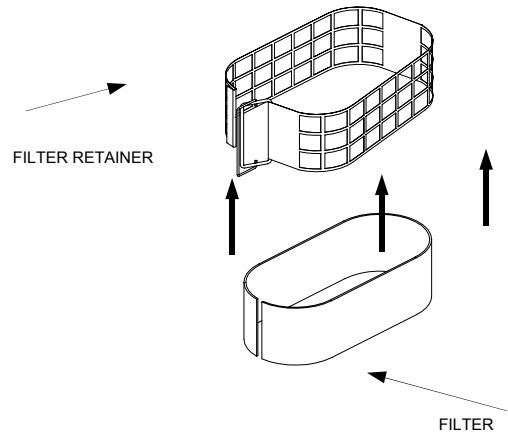
Keep appliance area free and clear from combustible materials, gasoline and other flammable vapors and liquids. Ensure that the flow of combustion and ventilation air is free from all obstructions.

Replace filter at least:

- once every 2 weeks
 - minimum once a day when sanding drywall
 - each time when connecting heater at different location
- * Clean burner screen with each filter change;
(see next window)

Filter replacement:

- Shut off gas supply
- Grasp filter retainer and pull together at retainer grips
- Free filter retainer
- Remove and discard filter
- Replace with a new filter
- Reinstall filter retainer, complete with filter



Clearing Burner Screen:

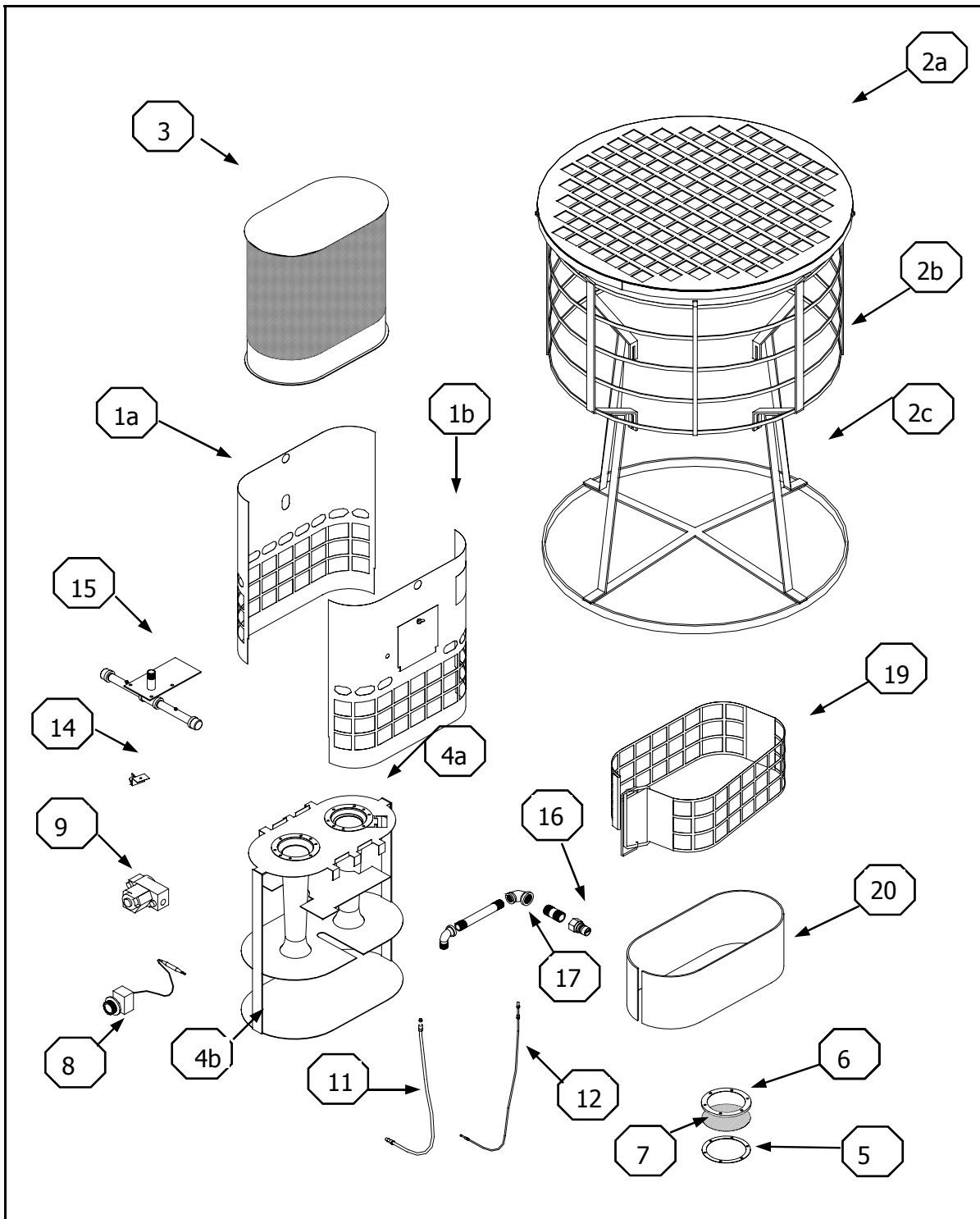
- Make sure gas supply is off
- Use compressed air. If air is not available on the site, aerosol can is available: Part # JH-0930-XX
- Insert air nozzle through the pilot lighting hole at side of mantle base
- Direct at flame retaining screen, and blow out any accumulated dust
- Re-open gas supply
- Re-light pilot, and continue using the construction heater as before.

3.0 REPLACEMENT PARTS

TABLE 3: REPLACEMENT PARTS LIST
(REFERENCE PAGE 10)

ITEM NO.	PART NAME	SCH-200-NG	SCH-200-LP
1a	SHROUD	JH-0614-BK	JH-0614-BK
1b	SHROUD	JH-0614-FR	JH-0614-FR
2a	TOP RING ASSEMBLY	JH-0612-TR	JH-0612-TR
2b	BOTTOM RING ASSEMBLY	JH-0612-BR	JH-0612-BR
2c	LEG ASSEMBLY	JH-0612-LG	JH-0612-LG
3	MANTLE	JH-0533-XX	JH-0533-XX
4a	VENTURI ASSY	JH-0619-XX	JH-0619-XX
4b	VENTURI EXTENSION	JH-0619-EV	JH-0619-EV
5	BURNER GASKET	JH-0437-XX	JH-0437-XX
6	FLAME SCREEN RETAINER	JH-0439-XX	JH-0439-XX
7	FLAME SCREEN	JH-0441-XX	JH-0441-XX
8	THERMOSTAT	JH-0516-XX	JH-0516-XX
9	1/2" MILLIVOLT GAS VALVE	JH-0512-NG	JH-0512-LP
10	<i>PILOT BURNER (not shown)</i>	<i>JH-0406-XX</i>	<i>JH-0406-XX</i>
10a	<i>PILOT ORIFICE</i>	<i>JH-0418-SN</i>	<i>JH-0418-SL</i>
11	PILOT TUBE	JH-0462-XX	JH-0462-XX
12	POWER PILE	JH-0504-XX	JH-0504-XX
13	<i>BLACK WIRE ASSY — (not shown)</i>	<i>JH-0465-XX</i>	<i>JH-0465-XX</i>
14	SAFETY SWITCH	JH-0405-XX	JH-0405-XX
15	ORIFICE MANIFOLD	JH-0618-XX	JH-0591-XX
16	QUICK CONNECT	JH-0601-ML	JH-0591-ML
17	INLET MANIFOLD ASSEMBLY	—	—
18	<i>HOSE ASSEMBLY — (not shown)</i>	JH-0902-XX	JH-0902-LP
19	FILTER BRACKET AND CLIP	JH-0938-XX	JH-0938-XX
20	FILTER	JH-0934-XX	JH-0934-XX

FIGURE 4: REPLACEMENT PARTS DIAGRAM
(REFERENCE PAGE 10)



4.0 GAS-FIRED INFRA-RED PORTABLE HEATER LIMITED WARRANTY

WHAT IS COVERED

Schwank Inc. (Manufacturer) warrants that this heating product is free from defects in material or workmanship under normal use and service subject to the terms of this agreement.

ONE YEAR WARRANTY

The Manufacturer's sole responsibility under this warranty is to repair or replace (at it's option) parts of this heater which the Manufacturer's examination shall disclose to be defective in workmanship or material. This obligation shall continue for a period of twelve (12) months from the date of sale to the heater's original retail buyer, with the sales receipt as proof of purchase date.

WHAT IS NOT COVERED

This warranty does not cover heating products improperly assembled, misused, exposed to or damaged by negligence, accident, corrosive or contaminating atmosphere, water, excessive thermal shock, impact, abrasion, alteration or operation contrary to the owner's manual or if the serial number has been altered, defaced, or removed. This warranty shall not apply if the input to the heating product exceeds by more than 2% the rated input on the rating plate. The manufacturer shall not be responsible for any service, labor, diagnosis, analysis, removal or transportation charges. All labor or service charges shall be paid by the owner. The manufacturer shall not be liable for any default or delay in performance by it of warranty caused by any contingency beyond its control, including war, government restrictions, or restraints, strikes, fire, flood, or short or reduced supply of raw material or parts.

PROCEDURE

Should you desire to assert a warranty claim, you must use the procedure described in your owner's manual which procedure is incorporated herein by reference.

LIMITATIONS AND EXCLUSIONS

This document contains all warranties made by the Manufacturer and may not be varied, altered, or extended by any person. There are no promises, or agreements extending from the Manufacturer other than the statements contain herein.

THIS WARRANTY IS IN LIEU OF ALL WARRANTIES, EXPRESSED AND IMPLIED, TO THE EXTENT AUTHORIZED BY THE LAWS OF THE STATE OF SALE, INCLUDING SPECIFICALLY THE WARRANTIES OF MERCHANTABILITY OR FITNESS FOR A PARTICULAR PURPOSE.

It is understood and agreed that the Manufacturer's obligation hereunder is limited to repairing or replacing parts determined to be defective as stated above.

In no event shall the Manufacturer be responsible for any alleged personal injuries or other special, incidental or consequential damages.

As to property damages, contract, tort or other claim, the Manufacturer's responsibility shall not exceed the purchase price paid for the product.

Some states/provinces do not allow certain warranty exclusion or limitations on how long a warranty lasts or the exclusions or limitations of incidental or consequential damages. In such areas, the above limitations or exclusions may not apply to you and are not intended to do so where prohibited by law. This warranty gives specific legal rights. You may also have other rights which vary from state to state.

**Schwank Inc.
5285 Bradco Blvd.
Mississauga, Ont., Canada L4W 2A6**

An ISO 9001 Registered Company.

5.0 PROCEDURE FOR SERVICE OR WARRANTY CLAIM

1. Contact the dealer from whom you purchased the product or a professional gas appliance service person to determine the problem.

2. The dealer or the professional gas service person may replace or repair the defective part or require the part to be removed and shipped to the manufacturer for repair or replacement.

3. Note to dealers, professional gas service person and distributors: all returned parts must be accompanied by a completed "Returned Material Tag" which is provided to all distributors.

4. All service charges and shipping costs are the responsibility of the owner.

5. All service and warranty claims must have the product model and serial number. When applicable, on the Returned Material Tag.

Under no circumstances should you or any repair person unauthorized by the manufacturer attempt to remove, or replace a part. Such activity will invalidate the warranty. (See the following page for complete warranty terms.)

.....

CUSTOMER'S RECORD

Keep for your records. Record the information concerning your new Schwank gas-fired infra-red construction heater. The model number and the serial number will be found on the rating plate.

Date of Purchase: _____ Schwank Model No.: _____ Serial No. _____

Dealer's Name _____

Address _____

City _____ State/Province _____ Zip/Postal Code _____

.....



LIMITED WARRANTY CERTIFICATE

FOR GAS-FIRED INFRA-RED CONSTRUCTION HEATER : SCH SERIES

The Manufacturer warrants that this product is free from defects in material or workmanship under normal use and service subject to the terms of this document.

ONE YEAR WARRANTY

Subject to the conditions and limitations stated herein, during the term of this limited warranty, we will repair or replace (at our option) any component part of the heater as defined below, which the Manufacturer's examination determines to be defective in workmanship or material for a period of one years (1 year) from the date of installation, unless otherwise specified below. This warranty applies to the heater's original owner, and subsequent transferees and only if the unit is installed and operated in accordance with the printed instructions accompanying the unit and in compliance with all applicable installation, building codes and good trade practices.

WHAT IS NOT COVERED

This warranty does not cover heating products improperly installed, misused, exposed to or damaged by negligence, accident, corrosive or contaminating atmosphere, water, excessive thermal shock, impact, abrasion, alteration or operation contrary to the owner's manual or if the serial number has been altered, defaced or removed. This warranty shall not apply if the input to the heating product exceeds by more than 2% of the rated input on the rating plate. The Manufacturer shall not be responsible for any expenses, including service, labor, diagnosis, analysis, material or transportation charges incurred during removal or reinstallation of this product, or any of its components or parts. All labor or service charges shall be paid by the owner. The Manufacturer shall not be liable for any default or delay in performance by its warranty caused by any contingency beyond its control, including war, government restrictions, or restraints, strikes, fire, flood, acts of God, or short or reduced supply of raw materials or products.

WARRANTY PROCEDURE

To establish the installation date for any purpose under this Limited Warranty, you must retain the original records that can establish the installation date of your unit. If you do not provide such documents, the start date of the term of this Limited Warranty will be based upon the date of unit manufacture, plus thirty (30) days. Failure to maintain the equipment through regular annual service maintenance by a qualified service technician shall void the warranty.

LIMITATIONS AND EXCLUSIONS

This document contains all warranties made by the Manufacturer and may not be varied, altered or extended by any person. There are no promises, or agreements extending from the Manufacture other than the statements contained herein. THIS WARRANTY IS IN LIEU OF ALL WARRANTIES EXPRESSED OR IMPLIED, TO THE EXTENT AUTHORIZED BY THE LAWS OF THE JURISDICTION, INCLUDING SPECIFICALLY THE WARRANTIES OR MERCHANTABILITY OF FITNESS FOR A PARTICULAR PURPOSE.

It is understood and agreed that the Manufacturer's obligation hereunder is limited to repairing or replacing parts determined to be defective as stated above. In no event shall the Manufacturer be responsible for any alleged personal injuries or other special, incidental or consequential damages. As to property damages, contract, tort or other claim the Manufacturer's responsibility shall not exceed the purchase priced paid for the product.

All replacement parts will be warranted for the unused portion of the warranty coverage period remaining on the applicable unit.

Some Authorities do not allow certain warranty exclusions or limitations on how long a warranty lasts or the exclusions or limitations of incidental or consequential damages. In such cases, the above limitations or exclusions may not apply to you and are not intended to do so where prohibited by law. This warranty gives you specific legal rights. You may also have other rights which vary by each jurisdiction.

SCHWANK INC. 5285 BRADCO BLVD. MISSISSAUGA, ON, L4W 2A6 Ph: 905-712-4766

SP-DCHX-BX-02A
SCH series WARRANTY
May 2004
RL: 2
KH