



MonsterFans
by Schwank

MonsterFans Oil Change Guide

Subject to changes without notification.

MonsterFans oil change guide

This procedure is relevant for both a gear reducer and motor oil change or a gear motor oil change. Both units are referred to as a gearbox in this document.

Tools Required

- Shallow oil pan capable of holding up to 3 litres
- 6mm allen key
- 13mm spanner wrench
- Large syringe
- Rags

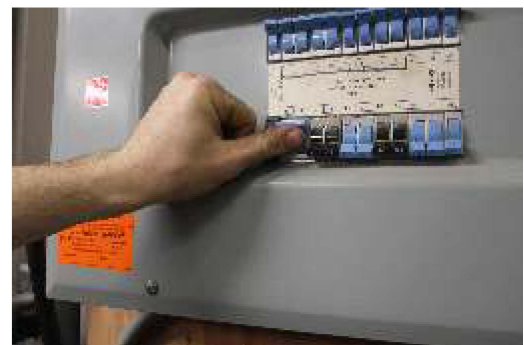
Materials Required

- Oil [specific to your fan) see below

Preparation

Make sure breaker for fan is turned **OFF** before beginning and use lock-out procedures as per your regulation/code.

Look for sticker located on the side of the gearbox for your fan's specific oil type: Mobile 630, Omala 220 HD or Omala 220.



Gearbox Model	Fan Size	Amount of Oil
SK32	20ft / 24ft [6.1m / 7.3m]	3.28qts [3.1 L]
SK22	16ft [4.9m]	1.9qts (1.8L]
SK12	8ft / 12ft [6.1m / 7.3m]	0.95qts [0.9L]



Note: Both Mobile 630 and Omala 220 HD are synthetic oils, do not mix with regular oil types.

MonsterFans oil change guide

1. For SK32 unscrew eyehook from gearbox, drain plug is directly above eyehook. Please note that SK12 and SK22 are not equipped with an eyehook and can proceed to the next step.

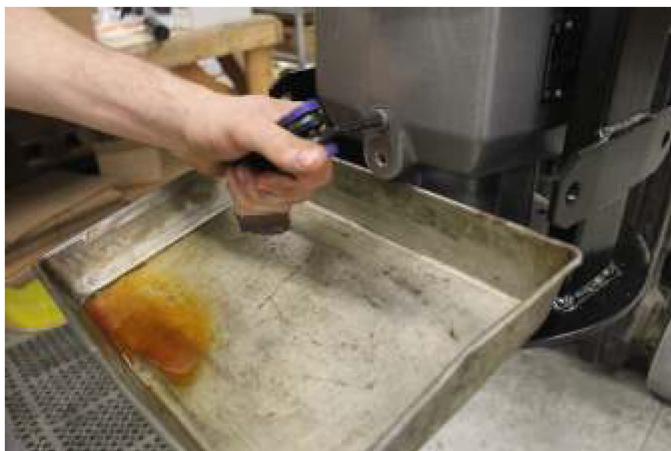
Note: Oil will not drain from removal of eyehook.



2. Place oil pan under drain plug, supporting oil pan properly.



3. Remove drain plug using 6mm allen key.



4. On right side of gearbox remove the fill plug in upper right corner using 6mm allen key.



5. Allow oil to drain fully.

6. Reinsert drain plug and eyehook.



MonsterFans oil change guide

- 7. Dispose of old oil responsibly.
- 8. Remove fill plug on opposite side of hex head fill plug using 13mm spanner wrench.



- 9. Using a syringe fill the gearbox until oil level is within 1/2" [12mm] or closer to the fill level plug.



Note: Verify amount of oil in the chart.

Gearbox Model	Fan Size	Amount of Oil
SK32	20ft / 24ft [6.1m / 7.3m]	3.28qts [3.1L]
SK22	16ft [4.9m]	1.9qts [1.8L]
SK12	8ft/ 12ft [6.1m / 7.3m]	0.95qts [0.9L]

- 10. Reinsert fill plugs.
- 11. Check hub, fan frame and area around gear unit for any spills or excess oil.
- 12. Fan is ready to be re-commissioned.

Note: Oil should be changed every 3 years of use.