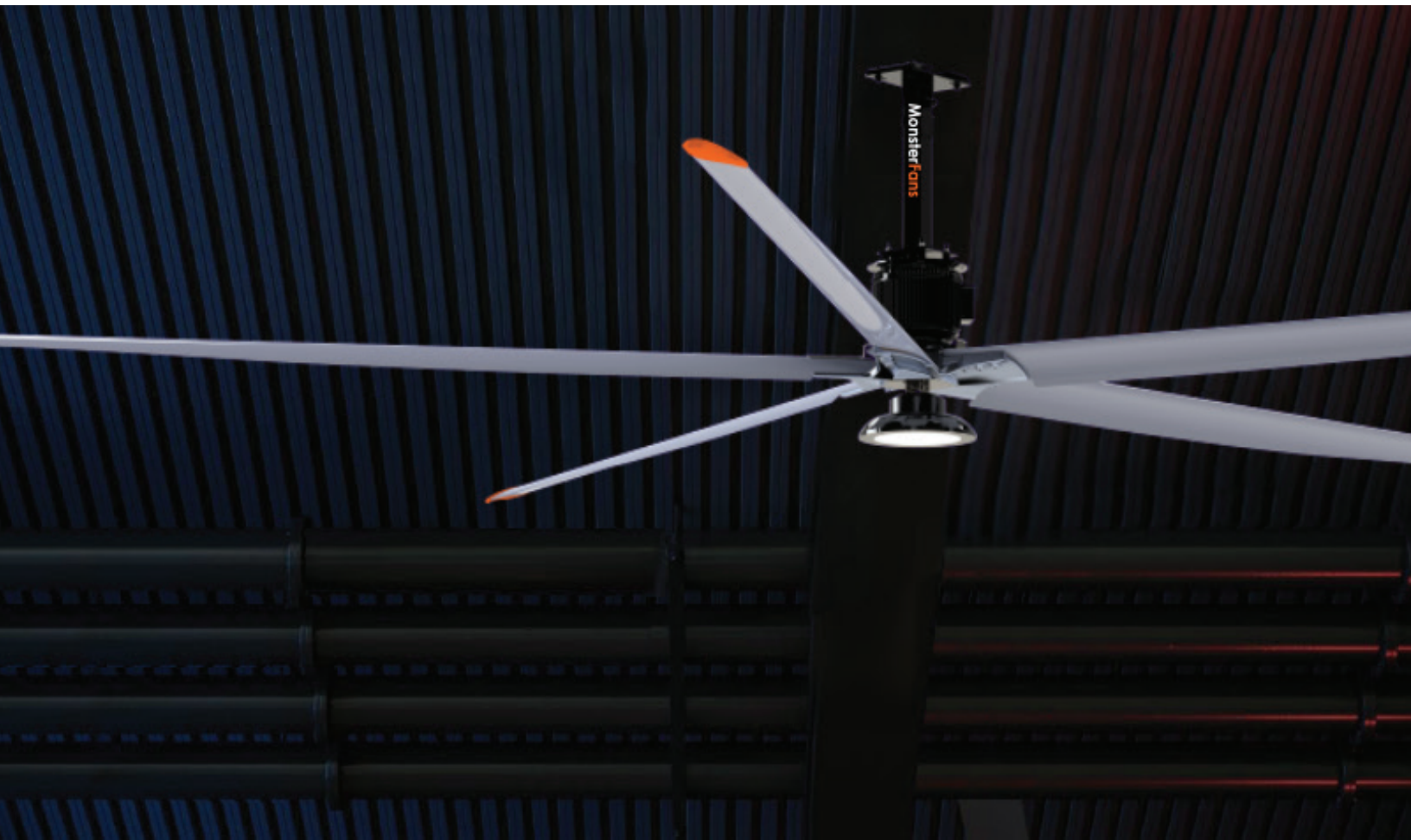




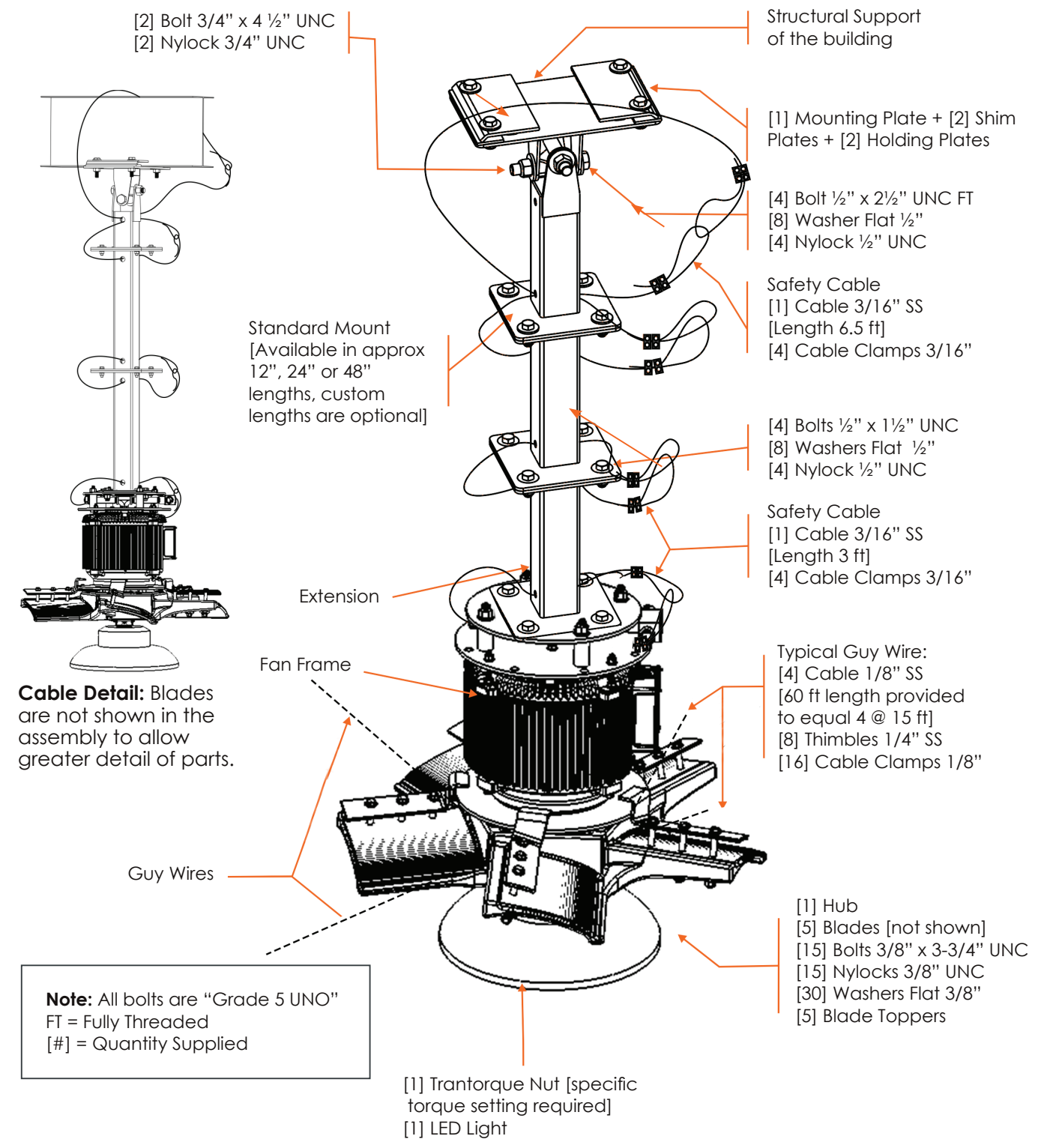
MonsterFans DD Series

Submittal

Gearless Direct-Drive HVLS Fan



MonsterFans DD Series Fan Components Diagram



Control Options

MonsterFans Smart Control



- Automated Fan Control for Single or Multiple Fans
- Continually Measures Temperature and Humidity, Adjusting Fan Speed Accordingly
- Integrated Light Operation to Control On/Off
- Plug-and-Play Installation
- Monitor Performance of Motor and Drive

MonsterFans Touch Control



Touch Pad Control

- Single Point Fan Control
- Controls up to 65 Fans
- CAT-5 Daisy Chain Connections
- Intuitive Operation
- Individual and Group Controlling
- Remote Diagnostics
- Over 500m [1640'] of Wire Distance

MonsterFans Link Control



- Single Point Fan Control
- Controls up to 247 Fans
- Uses BACnet Signal
- Works in Conjunction with Building Automation Controls
- Individual Fan and Group Controlling

MonsterFans Simple Control

- One MonsterFans Simple Control Per Fan Required
- Provides Remote Operation for Fan Mounted VFD
- User Friendly, Simplified Installation and Operation

MonsterFans DD Series Fan Specifications

MODEL	8 ft [2.4 m]	12 ft [3.7 m]	16 ft [4.9 m]	20 ft [6.1 m]	24 ft [7.3 m]
Model #	MF-DD08-XX	MF-DD12-XX	MF-DD16-XX	MF-DD20-XX	MF-DD24-XX
Input power	208–240 VAC, 50/60 Hz, 1 Φ; 208–240 VAC/400–480 VAC, 50/60 Hz, 3 Φ				
Diameter	8 ft [2.4 m]	12 ft [3.7 m]	16 ft [4.9 m]	20 ft [6.1 m]	24 ft [7.3 m]
Weight	220 lbs [99 kgs]	245 lbs [111 kgs]	275 lbs [125 kgs]	320 lbs [145 kgs]	347 lbs [157 kgs]
Airflow	59,494 CFM	70,424 CFM	127,033 CFM	176,200 CFM	315,026 CFM
Max. velocity	386 ft/min	386 ft/min	550 ft/min	505 ft/min	497 ft/min
Max. rotational speed	105 RPM	105 RPM	80 RPM	63 RPM	53 RPM
Max. affected area	60 ft [18 m]	80 ft [24 m]	140 ft [43 m]	200 ft [61 m]	230 ft [70 m]
Power usage	782 W [5 amps at 230 V]	782 W [5 amps at 230 V]	939 W [5 amps at 230 V]	1460 W [5 amps at 230 V]	1486 W [5 amps at 230 V]
Motor power	2 HP [1.5 kW]	2 HP [1.5 kW]	2 HP [1.5 kW]	2 HP [1.5 kW]	2 HP [1.5 kW]
Motor	Gearless direct-drive Nidec motor				
Hub	713 Cast Aluminum Alloy				
Noise level	45 dBA				
Max. ceiling slope	18.5°				
Blades	5 - 6063 Extruded Anodized Aluminum with High Impact Polystyrene blade end caps				
Airfoil clearance	1.5 ft [0.46 m] on sides 5 ft [1.5 m] below the ceiling				
Mounting	Versatile universal mounting system included with fan				
Safety components	<ul style="list-style-type: none"> • Safety cables - 3/16" Stainless Steel • Guy wires - 1/8" Stainless Steel • Safety clips - Zinc Plated Steel 				
Control	<ul style="list-style-type: none"> • Includes standard Schneider VFD • Optional controls include Simple fan control, Smart fan control and/or Touch fan control • Building automation systems integrations 				
Warranty	<ul style="list-style-type: none"> • Lifetime warranty on blades, hub & mounting system • 5-year Limited Warranty 				
Certification	UL Standard, CSA Standard & CE				
Options	<ul style="list-style-type: none"> • Optional wind sensor • Optional mounting extension kits • Fire-relay 				

*Please see MonsterFans DD Series Installation Guide for more information regarding mounting hardware.

8 ft [2.4 m] MonsterFans DD Series Fan Spec Drawing

ITEM NO.	DESCRIPTION	QTY.
1	GEARLESS "Direct Drive" - 2 HP-WITH-LIGHT	1
2	8' MonsterFans DD Series Fan BLADE SET [5 BLADES]	1 SET

Schwank	
TITLE: 8 FT-MonsterFans DD Series-SF5-2HP-230/460V-WITH-100-277V-LIGHT-FAN	
SIZE	DWG. NO.
B	MF-DD08-XX
REV 0	
SCALE: 1:20 WEIGHT: 216.41 lbs SHEET 1 OF 1	

DRAWN: J.MARIS LAST REVISION DATE: ENG. APPR. DATE: MFG. APPR. DATE:	CHECKED BY: CHECKED DATE: LAST DATED DATE:
DRAWING DATE: 03/05/2019 UNLESS OTHERWISE SPECIFIED: DIMENSIONS ARE IN INCHES DIMENSIONS IN PARENTHESES ARE IN MILLIMETERS FINISH: AS SPECIFIED TOLERANCE:	JANUARY 28, 2020 4:14:27 PM Q.A.

MATERIAL: AS SPECIFIED FINISH: AS SPECIFIED DO NOT SCALE DRAWING PROPRIETARY AND CONFIDENTIAL THIS DRAWING IS THE PROPERTY OF SCHWANK AND IS NOT TO BE REPRODUCED OR TRANSMITTED IN ANY FORM OR BY ANY MEANS WITHOUT THE WRITTEN PERMISSION OF SCHWANK. SCHWANK ASSUMES NO LIABILITY FOR DAMAGES OF ANY KIND. IF YOU HAVE ANY QUESTIONS REGARDING THIS DRAWING, SCHWANK SHOULD BE CONTACTED IMMEDIATELY FOR RESPONSE.	COMMENTS: REVISIONS:
---	-------------------------

12 ft [3.7 m] MonsterFans DD Series Fan Spec Drawing

ITEM NO.	DESCRIPTION	QTY.
1	GEARLESS SF5 - 1 HP-WITH-LIGHT	1
2	12' MonsterFans DD Series Fan BLADE SET [5 BLADES]	1 SET

Schwank

TITLE: 12 FT-MonsterFans DD Series-SF5-1HP-230/460V-WITH-100-277V-LIGHT-FAN

SIZE DWG. NO. REV
B MF-DD12-XX 0

SCALE: 1:50 WEIGHT: 240.82 lbs SHEET 1 OF 1

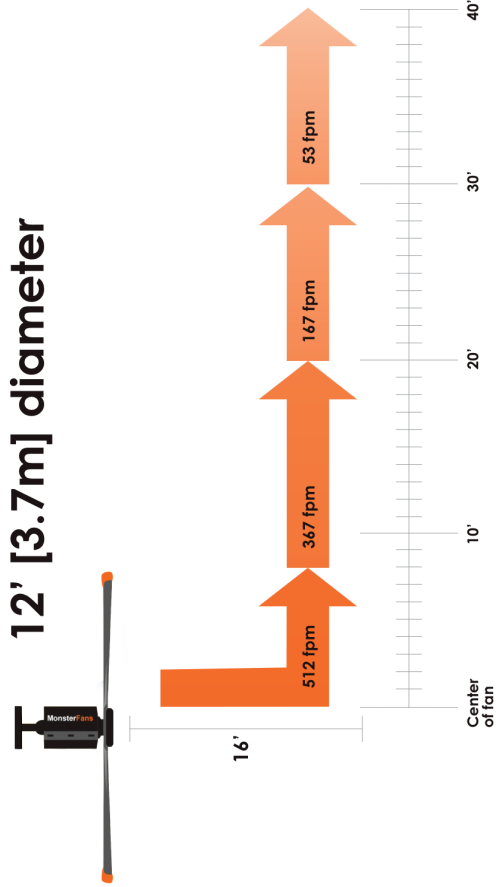
COMMENTS:
 DRAWN: 8/20/19
 Last Revision Date: 03/05/2019
 Checked By: MEG APPR.
 Last Saved Date: January 28, 2020 4:14:27 PM
 Q.A.

REVISIONS:

PROPERTY AND CONFIDENTIALITY:
 THE INFORMATION CONTAINED IN THIS DRAWING IS THE SOLE PROPERTY OF SCHWANK. IT IS TO BE USED FOR THE PROJECT AND SITE SPECIFICALLY IDENTIFIED HEREIN. WITHOUT THE WRITTEN PERMISSION OF SCHWANK, ITS REPRODUCTION, DISTRIBUTION, OR DISSEMINATION IN ANY FORM OR BY ANY MEANS, INCLUDING PHOTOCOPYING, RECORDING, OR BY ANY INFORMATION STORAGE AND RETRIEVAL SYSTEM, IS PROHIBITED. SCHWANK SHALL BE CONTACTED IMMEDIATELY FOR RESPONSE.

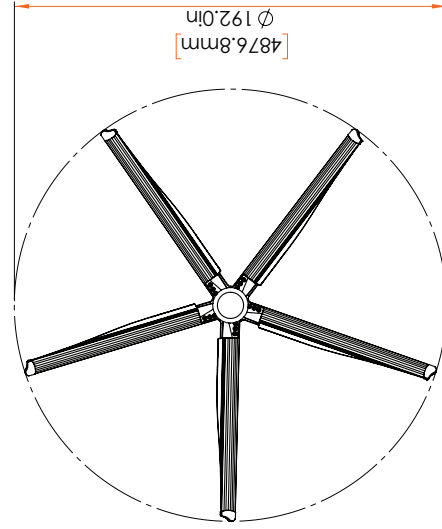
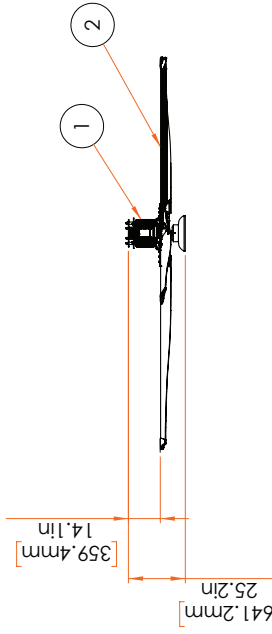
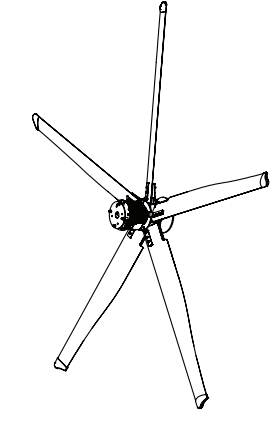


Velocity Map 12' [3.7m] diameter



Conditions:
 Test results are based on a blade mounting height of 16' [4.9m] from the floor. Results were measured 1' [0.3m] off the floor. Average air speeds were utilized as actual air velocity from fan is gusting. Results will vary depending on testing conditions.

16 ft [4.9 m] MonsterFans DD Series Fan Spec Drawing



8

ITEM NO.	DESCRIPTION	QTY.
1	GEARLESS SF5 - 2 HP-WITH-LIGHT	1
2	16' MonsterFan DD Series Fan BLADE-SET (5 BLADES)	1 SET

DRAWN: 8 AWKS	Drawing Date: 03/02/2019
ENG APPR. Date:	Checked By:
ENG APPR.	MFG APPR.
UNLESS OTHERWISE SPECIFIED:	Material: AS SPECIFIED
UNLESS OTHERWISE SPECIFIED:	FINISH: AS SPECIFIED
UNLESS OTHERWISE SPECIFIED:	DO NOT SCALE DRAWING

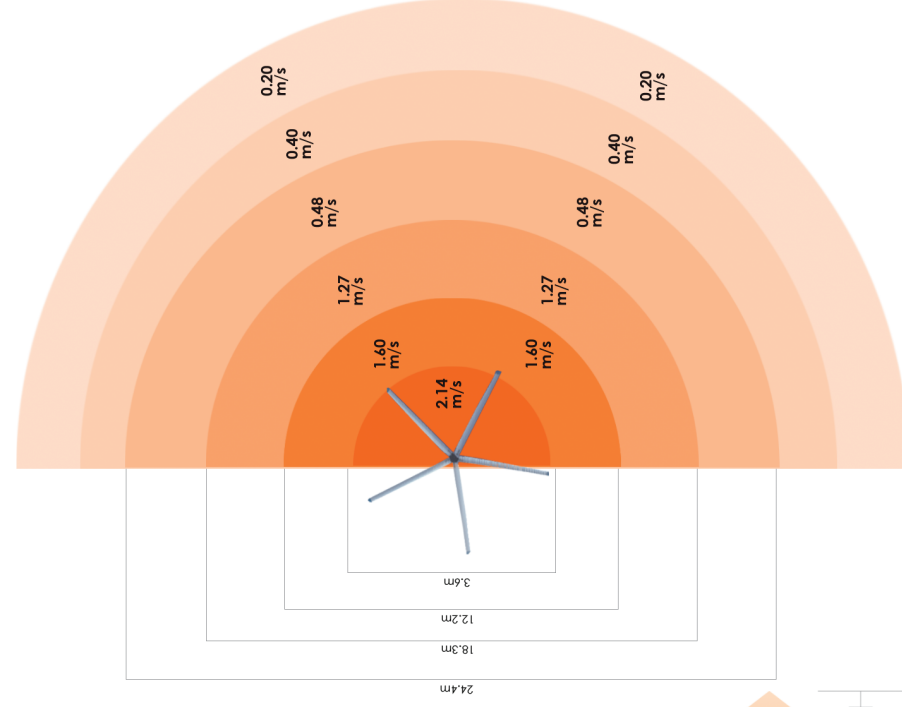
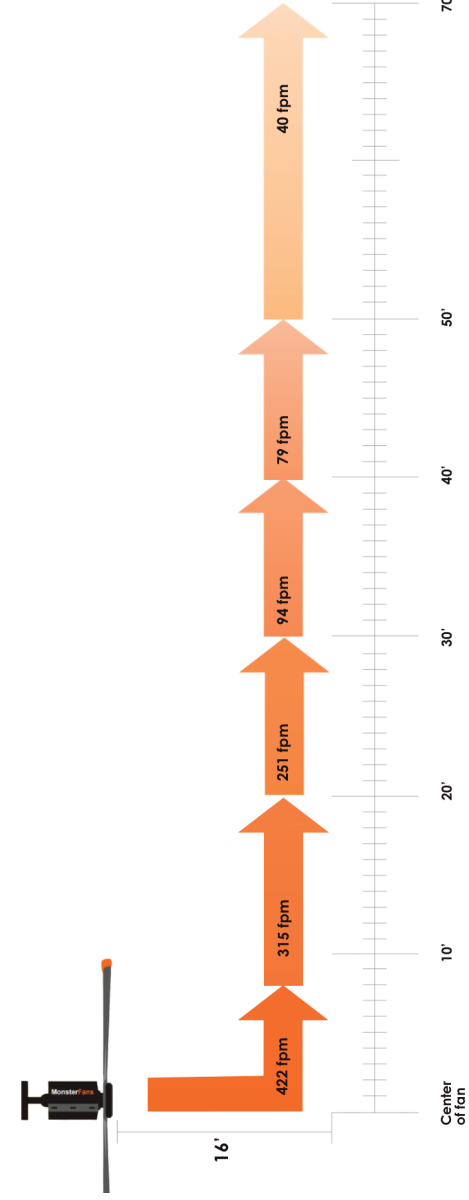
REVISIONS:	COMMENTS:
1	1
2	2
3	3
4	4
5	5

ITEM NO.	DESCRIPTION	QTY.
1	GEARLESS SF5 - 2 HP-WITH-LIGHT	1
2	16' MonsterFan DD Series Fan BLADE-SET (5 BLADES)	1 SET

Schwank
TITLE: 16 FT-MonsterFans DD Series-SF5-2HP-230/460V-WITH-100-277V-LIGHT-FAN
SIZE: DWG. NO. REV
B MF-DD16-XX 0
SCALE: 1:50 | **WEIGHT:** 297.85 lbs | **SHEET 1 OF 1**



Velocity Map 16' [4.9m] diameter



Conditions:

Test results are based on a blade mounting height of 16' [4.9m] from the floor. Results were measured 1' [0.3m] off the floor.
 Average air speeds were utilized as actual air velocity from fan is gusting. Results will vary depending on testing conditions.

C

9

20 ft [6.1 m] MonsterFans DD Series Fan Spec Drawing

ITEM NO.	DESCRIPTION	QTY.
1	GEARLESS SF5-2 HP-WITH-LIGHT	1
2	20' MonsterFan DD Series Fan Blade Set [5 BLADES]	1 SET

Schwank

TITLE: 20 FT-MonsterFans DD Series-SF5-2HP-230/460V-WITH-100-277V-LIGHT-FAN

SIZE: DWG. NO. **B MF-DD20-XX** REV. **0**

SCALE: 1:30 WEIGHT: 323.17lbs SHEET 1 OF 1

COMMENTS:

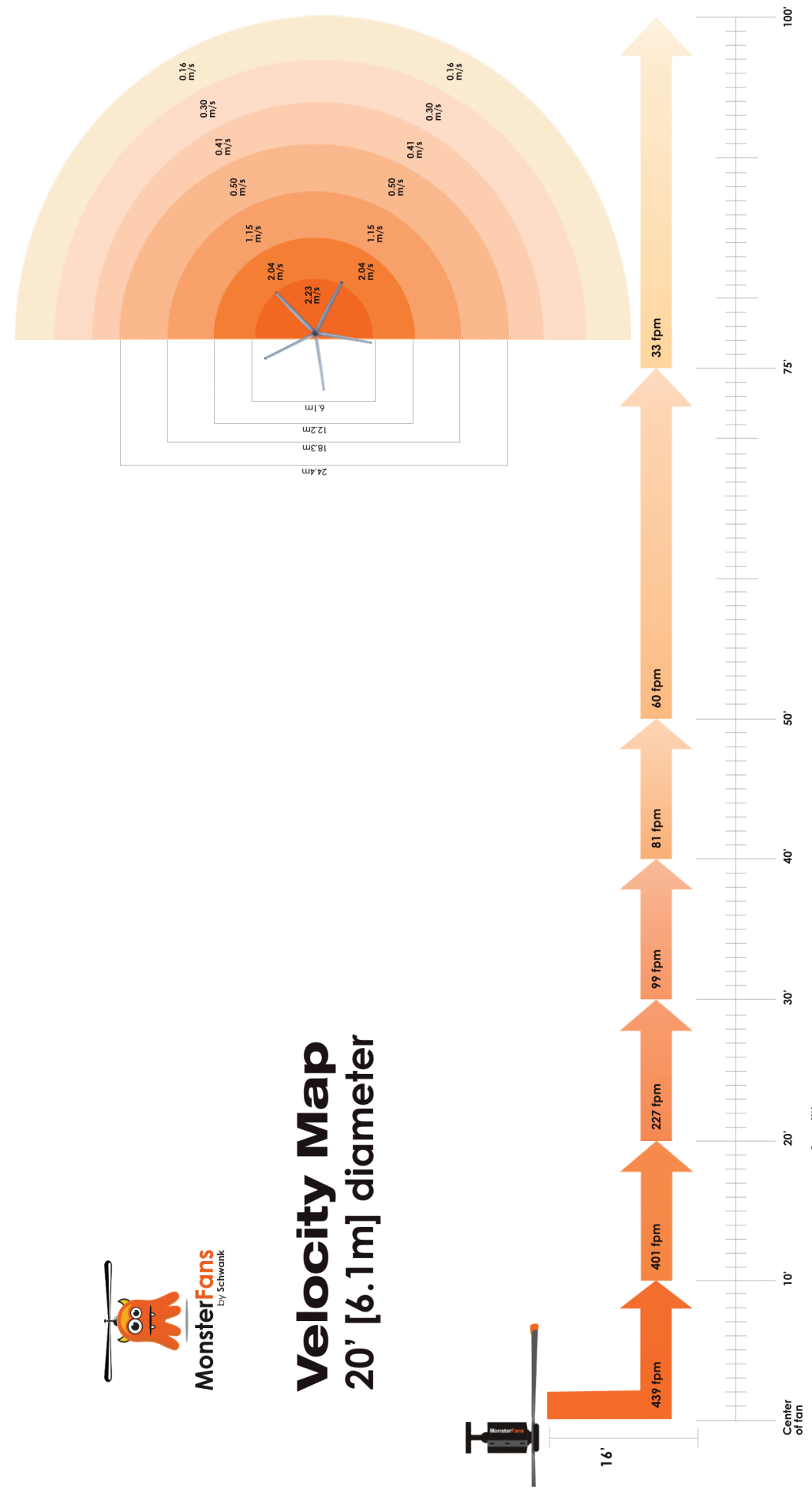
REVISIONS:

REPAIRS AND CONFIDENTIALITY: THIS DRAWING IS THE PROPERTY OF SCHWANK. ANY REPRODUCTION IN PART OR AS A WHOLE WITHOUT THE WRITTEN PERMISSION OF SCHWANK IS STRICTLY PROHIBITED. SHOULD THERE BE ANY DISCREPANCIES WITH THIS CONSTRUCTION DRAWING, SCHWANK SHOULD BE CONTACTED IMMEDIATELY FOR RESPONSE.

UNLESS OTHERWISE SPECIFIED:

DRAWN: BAWES
Last Revision Date:
ENG APPR. DATE:
MFG APPR.
G.A.

DATE: 03/05/2019
CHECKED BY:
DATE: January 28, 2020 4:14:27 PM

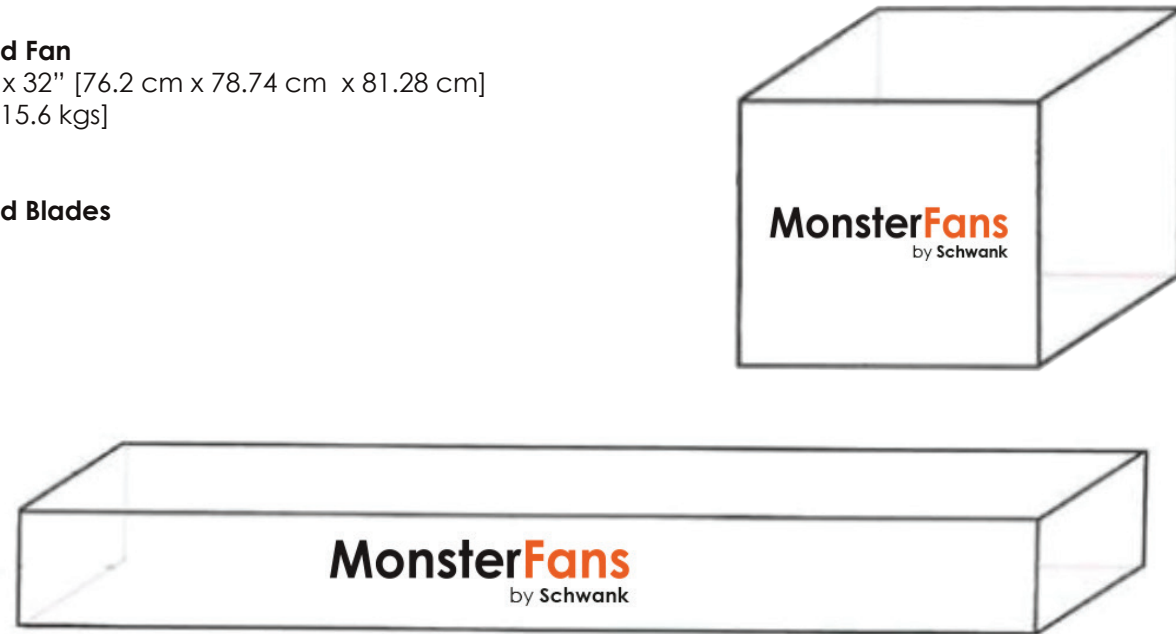


Conditions:
Test results are based on a blade mounting height of 16' [4.9m] from the floor. Results were measured 1' [0.3m] off the floor. Average air speeds were utilized as actual air velocity from fan is gusting. Results will vary depending on testing conditions.

MonsterFans DD Series Fan Packaging Details

Packaged Fan
 30" x 31" x 32" [76.2 cm x 78.74 cm x 81.28 cm]
 255 lbs [115.6 kgs]

Packaged Blades



Mounts & Extensions Packaging Details

These items can be placed inside the packaged fan when ordering with a fan.
 [Excluding 4 ft [1.22 m] items] Please add the additional weight to the fan packages above.

1 ft [0.31 m] Packaged UMH Mount
 9" x 9" x 15" [22.9 cm x 22.9 cm x 38.1 cm]
 22 lbs [9.98 kgs]

2 ft [0.61 m] Packaged UMH Mount
 9" x 9" x 28" [22.9 cm x 22.9 cm x 71.1 cm]
 33 lbs [14.97 kgs]

4 ft [1.22 m] Packaged UMH Mount
 9" x 9" x 51" [22.9 cm x 22.9 cm x 129.5 cm]
 47 lbs [21.32 kgs]

2 ft [0.61 m] UMH Extension
 9" x 9" x 28" [22.9 cm x 22.9 cm x 71.1 cm]
 21 lbs [9.53 kgs]

4 ft [1.22 m] UMH Extension
 9" x 9" x 49" [22.9 cm x 22.9 cm x 124.5 cm]
 31 lbs [14.06 kgs]

1-877-446-3727 [toll-free]
1-706-554-6191

monsterfans@schwankgroup.com

USA

**2 Schwank Way,
 Waynesboro, GA
 30830**

Canada

**5285 Bradco Blvd.,
 Mississauga, ON
 L4W 2A6**

schwankgroup.com/monsterfans

