

NOTICE:

Schwank reserves the right to make changes to equipment and specifications without obligation or notification.

This publication, or parts thereof, may not be reproduced in any form, without prior written consent from Schwank. Unauthorized use or distribution of this publication is strictly prohibited.

Schwank

5285 Bradco Boulevard,
Mississauga, Ontario,
L4W 2A6

2 Schwank Way
Waynesboro, Georgia,
USA, 30830

Customer and Technical Services

Phone: 1-877-446-3727

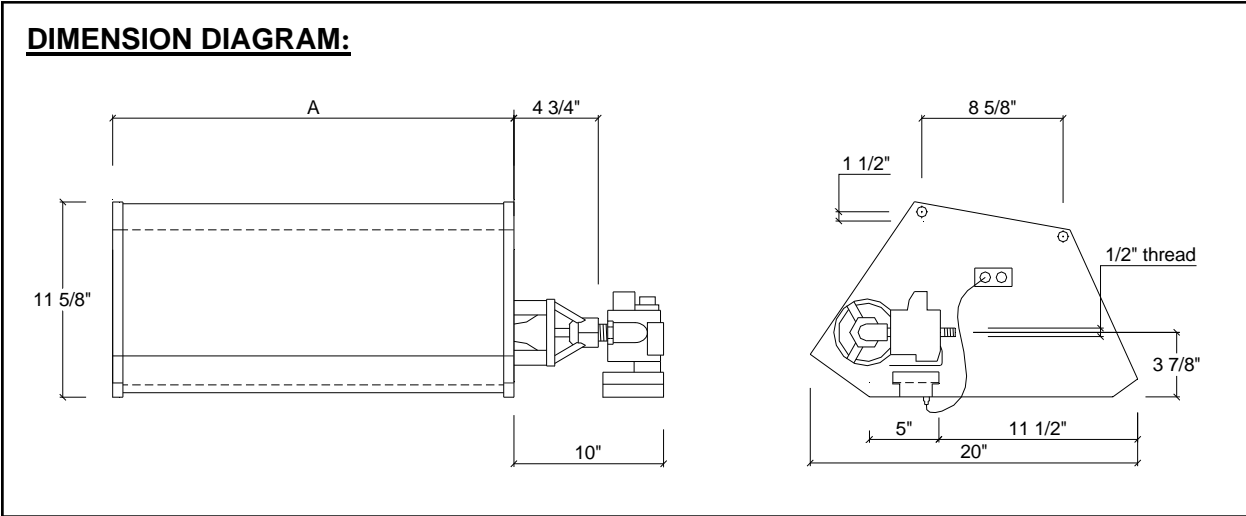
Fax : 1-866-361-0523

e-mail: csr@schwankgroup.com

www.schwankgroup.com

DIAGRAMS AND SPECIFICATIONS:

COMBINED INTENSITY HEATERS:

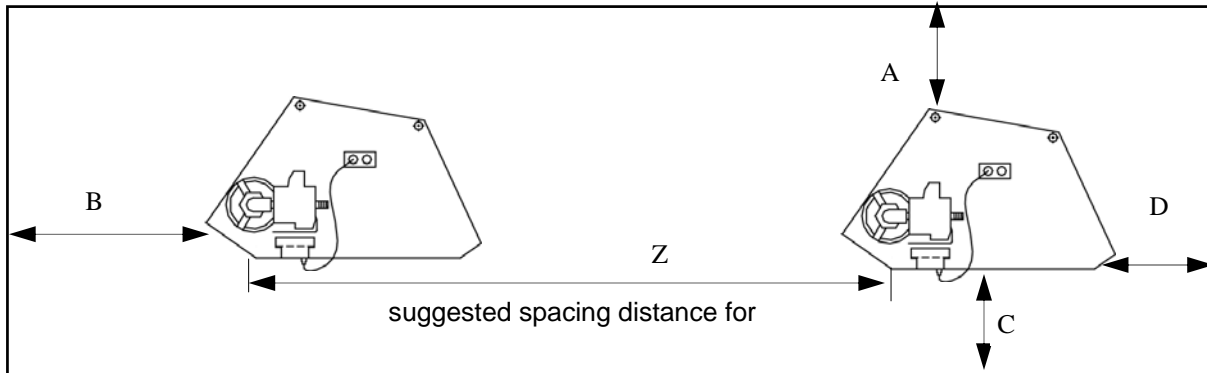


SPECIFICATIONS:

QUANTITY ON THIS PROJECT	MODEL & SIZE CONFIGURATION	DIMENSION A	CAPACITY (BTU/ hr) INPUT	VOLTAGE	CURRENT	WEIGHT IN LBS
	primoSchwank 10	23.75"	37,500	24 V AC	0.55 AMPS	23.5
	primoSchwank 15	34.50"	56,000			33.6
	primoSchwank 20	45.62"	75,000			40.3
	primoSchwank 30	67.32"	113,500			54.9

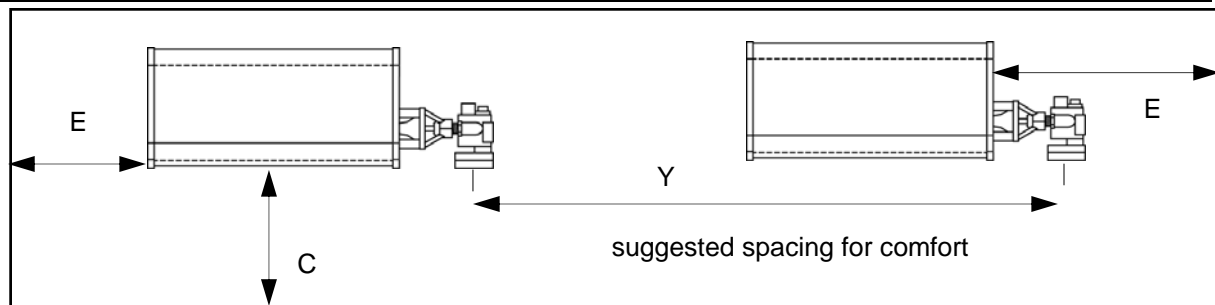
GAS SUPPLY	NATURAL GAS	MINIMUM LINE PRESS MAXIMUM LINE PRESS MANIFOLD PRESSURE	6" w.c. 14" w.c. 5" w.c.	1/2" GAS INLET PIPE SIZE
	PROPANE GAS	MINIMUM LINE PRESS MAXIMUM LINE PRESS MANIFOLD PRESSURE	11" w.c. 14" w.c. 10" w.c.	1/2" GAS INLET PIPE SIZE

HORIZONTAL MOUNTING DIAGRAM FOR COMBINED INTENSITY HEATERS:



CSA APPROVED MINIMUM CLEARANCE TO COMBUSTIBLES :

QTY	MODEL	HTR BOTTOM < C >	HTR FRONT < B >	HTR ENDS < E >	HTR TOP < A >	HTR REAR < D >
	primoSchwank-10	90"	30"	48"	18"	30"
	primoSchwank-15	96"	30"	48"	18"	30"
	primoSchwank-20	100"	36"	48"	18"	36"
	primoSchwank-30	105"	42"	48"	18"	42"

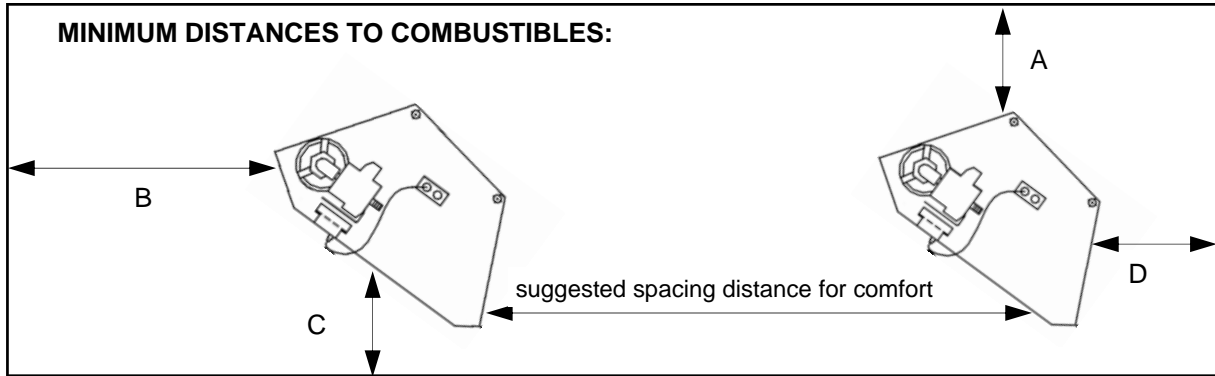


SUGGESTED MOUNTING DISTANCES FOR COMFORT*

QUANTITY OF HEATERS	MODEL	MINIMUM FLOOR HEIGHT < C >	MAXIMUM DISTANCE BETWEEN HEATERS < Z >	MAXIMUM DISTANCE BETWEEN ROWS < Y >
	primoSchwank 10	15'	25'	30'
	primoSchwank 15	18'	30'	40'
	primoSchwank 20	20'	35'	50'
	primoSchwank 30	24'	45'	70'

*These Mounting distances are suggested and are subject to on site conditions. If in doubt, please contact your Schwank distributor.

UP TO 45° ANGLE MOUNTING DIAGRAM FOR THE COMBINED INTENSITY HEATERS

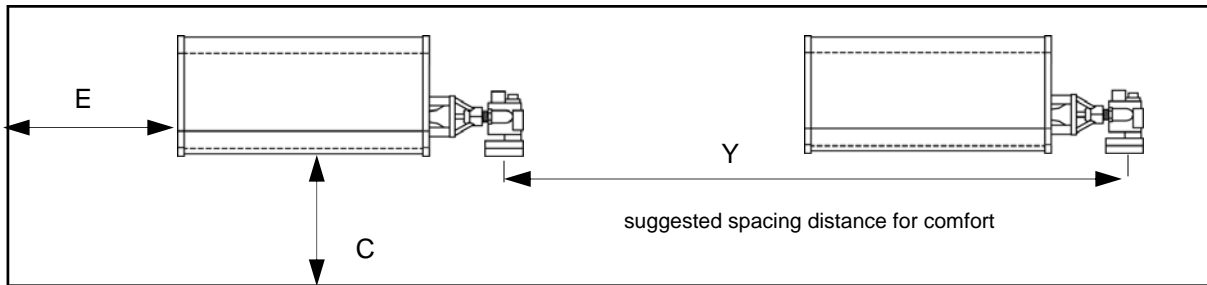


CSA APPROVED MINIMUM CLEARANCE TO COMBUSTIBLES :

QUANTITY OF HEATERS	MODEL	REAR OF HEATER < D >	TOP OF HEATER < A >	FRONT OF HEATER < B >	ENDS OF HEATER < E >	BOTTOM OF HEATER < C >
	primoSchwank 10	8"	24"	67"	48"	36"
	primoSchwank 15	8"	24"	66"	48"	36"
	primoSchwank 20	8"	24"	70"	48"	36"
	primoSchwank 30	8"	24"	74"	48"	36"

SUGGESTED MOUNTING DISTANCE FROM BURNER FOR COMFORT**

*Reflector with venturi must be in upper position



QTY OF HEATERS	MODEL	MINIMUM FLOOR HEIGHT < C >	FRONT OF HEATER < B >	MAXIMUM DISTANCE BETWEEN HEATERS < Y >	MAXIMUM DISTANCE BETWEEN ROWS < Z >
	primoSchwank 10	13'	13'	25'	50'
	primoSchwank 15	16'	16'	30'	75'
	primoSchwank 20	18'	18'	35'	100'
	primoSchwank 30	21'	21'	45'	145'

** These mounting distances are suggested and are subject to on site conditions. If in doubt, please contact your Schwank distributor.

COMPONENT DESCRIPTION:

THERMOSTAT	SCHWANK TRU-TEMP SET BACK STAT—WITH RADIANT AND AMBIENT SENSORS AND AUTOMATIC UNOCCUPIED MODE
	SCHWANK THERMO CONTROL PLUS
	120 VOLT LINE VOLTAGE
	24 VOLTS
IGNITION:	<input type="checkbox"/> DIRECT SPARK MODULE <input type="checkbox"/> OTHER _____
COMBINATION GAS VALVE:	<input type="checkbox"/> 24 VOLT <input type="checkbox"/> NATURAL GAS 5" W.C. MANIFOLD PRESSURE <input type="checkbox"/> PROPANE 10" W.C. MANIFOLD PRESSURE <input type="checkbox"/> OTHER _____
REFLECTORS	ALUMINUM, COLD BONDED CLAD STEEL
VENTURI TUBE:	ALUMINIZED STEEL BUILT INTO DOUBLE WALL REFLECTOR TO SUPPLY PRE-HEATED COMBUSTION AIR.
INSULATION:	CERAMIC HIGH TEMPERATURE INSULATION COVERED WITH ALUMINIZED STEEL TO MINIMIZE LOSSES TO CONVECTION HEAT.
BURNER	SINGLE WITH COMPLETE IGNITION / SENSING SYSTEM
CERAMIC TILE	SCHWANK EFFECT TILE 14/4 WITH INCREASED SURFACE INDENTATIONS AND HARD FINISHED EDGES
TILE RETAINERS	ALUMINIZED STEEL WITH SLIDE OPENING FOR SERVICING.
COMBUSTION	"COLD STATE" COMBUSTION OF 1,100 DEGREES CELSIUS TO ENSURE MINIMUM EMISSIONS